

Orange County
Model A Ford Club

THE DISTRIBUTOR

58 Years



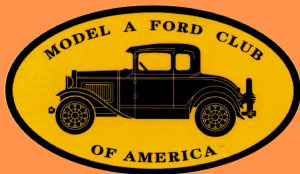
Volume 59 Issue 11

November, 2019

Editor Tissy Smith-Hatcher

Learn from the mistakes of others. You can never live long enough to make them all yourself.

Groucho Marx



WHEN WE COUNT
OUR BLESSINGS,
WE COUNT
OUR MEMBERS TWICE

TAKE TIME TO
VISIT FAMILY AND
FRIENDS THIS HOLIDAY



*Happy
Thanksgiving*

Inside this issue:

- President's Message 2
- The Color of Fashion in Your Model A World
- Tours & Activities/ Calendar/Swap Meets 3
- Jim's Tech Tips— Towing Your Model A on a Trailer 4
- Board Member Contact Info General Meeting Minutes 5
- Dues Applications 2020 6
- New Members/ Changes/Corrections 7
- MAFFI Membership Application 9

**VICE
PRESIDENT/
ACTIVITIES**

**TECHNICAL
DIRECTOR**

Is this YOU?



Make a Difference

**IT'S TIME FOR
BOARD ELECTIONS!**

(Contact Joe Goff)



Our annual
Installation Banquet
at The Villa Restaurant
in Orange on
January 5, 2020

**Complete your membership
application for 2020 on Page 6**

News From the President

October sped by in a flash. Rick and I enjoyed a nice trip but missed you all at the October meeting. I want to thank Jim Runyon for stepping in to run the board and general meetings. I heard that Doris Marshall was there to greet everyone! I'm sorry I missed seeing you, Doris.

I understand that the technical seminar in October was well attended and full of information about on leaf springs. Thank you John Carter for hosting and to Dennis Kliesen for organizing and leading the event.

The tour to Cabrillo Marine Museum on October 19 occurred while we were gone. We were sorry to miss it, sounds like a good time. I hear 8 Model A's and 2 moderns joined in and that the weather was beautiful. Thank you Steve Pavich for finding another California gem.

I want to thank Bev Marsh for suggesting the table top swap meet for the October meeting. I hope everyone had fun, and that a few of you made a little cash. Let's make this an annual event.

It has been reported to me that Diane Gaughen had a great new selection of logo articles for sale. Look for the date that those articles will be available at a meeting or call Diane to make special arrangements.

Also want to acknowledge that Ed Cote has informed us that he will be having open heart surgery in November. Ed, we will miss you during the next couple of months while you recover, but we know we will be seeing you soon.

One last important thing. We are still looking to fill board positions. These positions are key to making our club relative to our hobby

and for getting us on the road. I know for a fact that there is help for anyone considering taking on one of these roles. Please call me, Joe Goff or anyone on the current board if you'd like more information. I'M COUNTING ON YOU!!

See you on the road!
Louise Hall



By Louise Hall

The Color of Fashions in Your Model A World

By Peggy Gill, Sacramento Capitol A's

Prompted by a query from one of our fashion friends in Texas, I embarked on a project to determine which colors would be appropriate for a young woman in the Model A Era to wear. The project resulted in a lengthy thirteen-page article that included a "color dictionary" and a cross-referenced color table. However due to space limitations for publication in *The Restorer*, it was decided to publish the background and history of the project in *The Restorer* (slated for Jan/Feb 2020), and to direct readers to MAFCA's website for the color dictionary and color table.

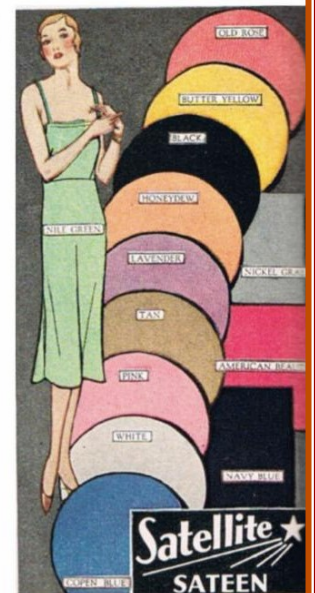
The Birth of the Color Dictionary:

What colors do you envision when you read the name of *Misty Morn*, *Gobelin*, or *Singalee*? It was a bit confusing even in the Model A era. Luckily for us, *Sears, Roebuck and Co.*, one of the largest distributors of apparel and textiles during the Model A era decided to take the lead in correcting the "color problem" by standardizing and simplifying color names for their customers.

The Color Tables:

Armed with seven different catalogs from Sears, Roebuck and Co., Montgomery Ward and Co., and National Bellas Hess Co., all from 1928-1931, I endeavored to develop a table of the colors of the clothing available for purchase cross referenced with the age/size group for which it was sold.

Access the full article and printable tables on the MAFCA Website at http://www.mafca.com/ef_articles.html



Upcoming Tours and Activities Calendar



Nov 2 (Sat) First Saturday Breakfast BS Session ~ 8AM at The Katella Grill, 1325 W Katella Ave, Orange



Nov 14 (Thu) General Meeting will be at 7:30PM. No admission prior to 7PM. CHOC Hospital Complex, 455 South Main Street, Orange. Guests are always welcome. Board meeting at 6PM



Nov 19 (Tues) Tour of Mount Baldy begins at 8:30AM at Panera Bread. See details on Page 11.



Nov 28 (Thu) **Fourth Thursday Breakfast is canceled for November.** For more info

contact Terry Collings at 714-970-7194

Dec 2-5 MAFCA National Awards Banquet, Claremont, CA; www.2019nab.com

Dec 4 (Wed) Pasadena High School Car Exhibit, 1:30PM-2:30PM, program will be "How to Present the Model A Ford to a Younger Crowd"



Dec 7 (Sat) First Saturday Breakfast BS Session ~ 8AM at The Katella Grill, 1325 W Katella

Ave, Orange



Dec 12 (Thu) General Meeting will be at 7:30PM. No admission prior to 7PM. CHOC Hospital Complex, 455 South Main Street, Orange.

Guests are always welcome. Board meeting at 6PM



Dec 26 (Thu) Fourth Thursday Breakfast. Location to be determined.

—2020—

Jan 5 (Sun) Installation Luncheon at 1PM at The Villa Restaurant, 510 E Katella Ave, Orange. \$30 per person. May be paid at either the November or December general meeting or mail to the club. For info contact Kathie McCall or Marilyn Hawkins.

Jan 12, 2020 Fabulous Ford Forever, Knott's Berry Farm. Check with Frank Reese for more info.

Apr 16-18, 2020 CCRG Jamboree, hosted by Bakersfield A's.

Gilmore Gas, 1920s, One Of Los Angeles' First Gas Stations



Swap Meets/Car Shows

Nov 3 (Sun) Turlock Classic Car and Parts Swap Meet, Stanislaus County Fairgrounds, 900 N Broadway Ave, Turlock 95380, admission \$8, opens at 6am

Nov 10 (Sun) Long Beach Hi Performance Show and Swap Meet, Long Beach Veteran's Stadium, 5000 Lew Davis, Long Beach 90808, 6am-1pm

Dec 4 (Wed) Pasadena High School Car Exhibit, Pomona Swap Meet, 1101 N McKinley Ave, Pomona 91768 5am-2pm

Dec 8 (Sun) Pomona Swap Meet, 1101 N McKinley Ave, Pomona 91768 5am-2pm

If you are aware of swap meets/car shows that you think others would be interested in attending, please send us the info so we can post it.

Jim's Tech Tip—Towing Your Model A on a Trailer

By: Jim Cannon

There will be times when you need to transport your Model A on a trailer. Here's a tip on trailer loading to help you tow safely.

When the car is loaded on the trailer, the tongue weight of the trailer on the trailer hitch (on the back of your car or truck) should be between 10-15% of the total weight of the combined "trailer+Model A". If you load the trailer with less than 10% of the weight on the hitch, the trailer will sway as the speed increases, which is very dangerous. Over 15% can put too much unnecessary load on the back of your tow vehicle, which can take weight off of your front wheels (needed for steering and braking) – which is also not good.

How do you know the weight of your "trailer+Model A"? I took my car on the trailer to my local feed store where they have a scale. Many truck stops also have scales. I parked the loaded trailer on the scale, disconnected my truck, and moved the truck off the scale. They charge a small fee to give you the weight. Once I had that total weight, it was easy to calculate 10% and 15% of that. For example, if your "trailer+Model A" is 4,200 pounds, your Target Tongue Weight is 420 to 630 pounds, call it 525.

Once you know the Target Tongue Weight that you are shooting for, how do you know what the actual tongue weight is when you put the Model A on the trailer? You can figure it out with a ruler or tape measure.

Go to a building supply store (like Home Depot) with your tow vehicle and no trailer. Measure and record the distance between the bottom of the trailer hitch and the ground. Now start loading 80# bags of dry concrete mix into your car trunk or truck bed until you have loaded your Target Tongue Weight. (I had a helpful young guy at HD load them in for me.) The exact load is not critical, but it must be above your 10% number. Now measure and record the distance between the bottom of the trailer hitch and the ground again. Once you have those 2 numbers, you can ask the helpful lad at the store to unload all those bags and put them back! Thankfully, you only have to do this exercise one time.

With these 2 measurements, before and after the load was added, you can quickly figure out the change in height above the ground when you have your Target Tongue Weight on the back of your tow vehicle. This CHANGE in the height of your trailer hitch is the HITCH DROP that you need to get when you load your Model A on the trailer.

Before attaching the trailer to your tow vehicle in the future, measure the height of the trailer hitch above the ground. Now attach the trailer and load your Model A on it. Pull the Model A forward on the trailer until your trailer hitch has dropped by your Target Hitch Drop. You can roll the Model A forward and backward a bit on the trailer to get the amount of drop that you are shooting for. Now tie the Model A down in this position on the trailer and be confident that you have enough, but not too much, tongue weight on your trailer hitch.

I have marked on my trailer the best spot to load a Model A to get the target tongue weight and hitch drop. When I put them on the mark, the tongue weight is correct.

For more tips on safe towing, check out the following web site: <https://www.curtmfg.com/towing-safety>
Let's be careful out there, and Have a Model A Day!

Model A Ford Club of America

We are a chartered member of the Model A Ford Club of America (MAFCA). It is a California not-for-profit corporation and a national historical society dedicated to the restoration and preservation of Model A Ford vehicles as manufactured from 1928 through 1931. We encourage our members to also participate in the MAFCA organization. Check out their website. It contains a wide variety of information about the organization, activities, technical references and instructions on how to join the organization. (www.mafca.com)



2018 BOARD MEMBERS

President – Louise Hall
714-282-0499/rickandlouise@socal.rr.com
VP/Activities – Steve Pavich
714-963-2633/spavich@socal.rr.com
Secretary – Norm Kredit
714-635-3335/leorakredit@yahoo.com
Treasurer – Marilyn Singer Hawkins
714-730-4026/jmsinger@pacbell.net
Technical – Dennis Kliesen
949-466-7475/drkliesen@gmail.com
Editor – Tissy Smith-Hatcher
714-546-8554/tissysmith1@gmail.com
Immediate Past President – Jim Runyon
714-527-1829/jamesfrunyon@aol.com

COMMITTEES

ACCC Representative – David Knapp
Breakfast Committee – Terry Collings
Club Greeter – Doris Marshall
Election Chairperson – Joe Goff
Historian & Librarian – Steve Pavich
Merchandise Director – Diane Gaughen
Pancake Breakfast Setup & Coordination – Frank Reese and Don Ratzlaff
Raffle – Ed Cote
Refreshments – Carolyn Ratzlaff and Dianne Runyon
Regional Representative, SCRG – Carolyn Ratzlaff
Sunshine & Sorrow – Pam Heiland
Webmaster – Bruce MacIntosh

We have removed all Committee members' emails and phone numbers in order to ensure their privacy. Members can find this info in your roster.

Please Note: Some information contained in our newsletter has been reprinted from other newsletters; we thank and acknowledge them.

General Meeting Minutes

OCMAFC General Meeting Thursday, October 10, 2019 CHOC Wade Education Center



Immediate Past President Jim Runyon called the meeting to order at 7:30 AM. Secretary Norm Kredit led the Pledge of Allegiance. Club Greeter Doris Marsh Marshall greeted "EVERYBODY". Treasurer Marilyn Singer-Hawkins followed up with some humor for the evening. Secretary Norm Kredit presented the minutes of September 12, 2019 as printed in the Distributor for approval. There was a motion moved and seconded, and they were passed by voice vote.

Treasurer Marilyn Singer-Hawkins presented our account balances as of September 30, 2019. Marilyn presented the new budget and its modification for the year 2020. One of the changes is to the price of the Pancake Breakfast which will be raised \$7 to \$8 for adults and keeping the price at \$4 for children. There are other minor adjustments. You may review with Marilyn or request a copy.

The club received two thank you letters from CHOC for our donation. She also sent our registration in to the Associated Car Clubs of California. Our contact man is David Knapp who keeps us informed as to legislation that impacts our hobby. Marilyn also sent in the forms and a check to repost our raffle activity to the State of California.

We are currently up to 159 members in the club. The latest members to join are Jeffrey Marx and Patrick and Gloria Munoz.

It was moved and supported to accept the Treasurer's report.

VP/Activities Steve Pavich has arranged a tour to the Cabrillo Marine Museum on Saturday, October 19. Steve has a sign-up sheet up front. We will meet at 9:00 A.M. at Starbucks in the Costco shopping center, 17850 Newhope St. in Fountain Valley. This center is just east of Euclid and north of Talbert on Newhope. Nothing is currently planned for November and the major event in December is the National Awards Banquet in Claremont on December 2 – 5. Register early. See information and registration on the back pages of the Restorer magazine or ask another member for a copy.

Technical Dennis Kliesen has arranged with John Carter to have a seminar on the repair or reconditioning of the Model A leaf springs on October 12. John's home is at 24605 Via Vallarta, Yorba Linda. Start time is 9:00 AM. Merchandise Diane Gaughen encouraged members to check out the new items in the back of the room. Of special interest this year are hooded sweatshirts with zippers. With winter coming, a new blue car blanket with logo should keep chills away. A pocketed polo shirt is also available.

Sunshine and Sorrow - Frank Reese updated the members as to his close friend Carol Howard's condition. So far the doctors have not been able to diagnose her condition. Fran Earhart is doing well after surgery and Don Johnson's wife is doing better. Joe Goff is also looking good again after his fall. Special Activities - Frank Reese updated members to the Fabulous Fords Forever event at Knott's Berry Farm on January 12, 2020. He mentioned that there will be slots for approximately 40 Model A's this year. He encouraged those who want to attend to sign up early. (Continued on Page 10)

2020 DUES INVOICE—You can use this form to submit your dues

Orange County Model A Ford Club

NAME(S): _____

AMOUNT: \$30.00 per family at same address

ANY ROSTER CHANGES?

If so, please list below:

Cars: _____

Telephone numbers: _____

Address: _____

E-mail address(es): _____

Any other changes: _____

*Want your photo included in the Roster? Just submit to
Bruce MacIntosh at: brucem@genimage.com
Please check the current Roster for accuracy!!!!*

Make your check payable to Orange County Model A Ford Club
(OCMAFC) and mail to the club at:

P.O. Box10595
Santa Ana CA 92711

**Payment MUST be received by 1/30/20 to be included in the club's
Roster**

ORANGE COUNTY MODEL A FORD CLUB

*Cordially invites you for
an afternoon of
toasts, good cheer and
delicious food*

**SUNDAY
JANUARY 5, 2020 AT 1PM**

**The Villa Restaurant
510 E Katela Ave, Orange, CA**

Contact Kathie McCall or Marilyn Hawkins for tickets (\$30/each).
Payment may be made at either the November or December
general meeting or by mail at
OCMAFC, P.O. Box 10595, Santa Ana, CA 92711

**NEW MEMBERS
CHANGES
CORRECTIONS**

Joujon-Roche, Phil ~ new email address: p.joujon-roche@roadrunner.com
Keating, John, 119 Monticello, Irvine, CA 92620-2636; Hm 949-857-8585; Cell 949-246-5821; Email dewberry65@gmail.com; Joined 2019; 1929-A 2-Dr Roadster
Welles, Jeffrey, 445 Via Lido Soud, Newport Beach, CA 92663-4929, Cell 949-683-

0630; Email jeff@jeffwelles.com; Joined 2019; 931 Coupe - heavily modified

Kulakowski, George, 16871 Cod Circle, Unit A, Huntington Beach, CA 92647-7933; Cell 714-393-9907; Email scckayak@earthlink.net; Joined 2019; 1931 Model 79-B Panel Delivery

Gaynor, Jeremy & Susan, 104 Oakbriar Court, Penfield, NY 14526-2637; Jeremy's Cell 714-597-5897; Susan's Cell 585-305-0002; Emails Jeremy: jsgaynor1@gmail.com/Susan: segaynor3@gmail.com

Rivard, David, PO Box 249, Vail, AZ 85641; Ph 520-428-4929 ; Email modeladude@outlook.com

Mark Your Calendar!
December 2nd - 5th
 Claremont, California

Registration Now Open!
www.2019NAB.com
 Early Bird Discount



Claremont, California
(909) 445-1831

("NAB" Group Discount Code)

Register Online at

www.2019NAB.com/hotel

\$129 ++ per night

**The Pomona Valley Model A Ford Club invites you to...
 GET YOUR KICKS ON ROUTE 66!**

- Come stay in Southern California, known for its fun in the sun.
- Enjoy our festive welcome reception with music performed by local Model A Owners & Musicians.
- Visit the historic National Hot Rod Association Car Museum.
- Experience the amazing Sam Maloof Home & Gardens Tour.
- See Technical & Information Seminars presented by some of the best-known names in the Model A community, *all in one place!*
- More than eleven events scheduled with something for everyone.
- Event Information and Registration Forms are now available on the National Awards Banquet website at www.2019NAB.com

MAFFI Membership Application Form

Over Seventy Years Ago... Henry Ford created his legendary Model A Ford, now an icon of Americana representing the transition from flappers to breadlines as the depression rolled across the continent. You can help to preserve Henry's Lady, the Model A Ford and the dynamic era of 1927 through 1931 by joining the Model A Ford Foundation. MAFFI is dedicated to the preservation of historical information and memorabilia of this time of change in America. Your membership donation is tax deductible under the Internal Revenue Service rule 501 (c)3 and will help us with our many projects and worthwhile goals such as the Ford Parts Project and the building of research centers in many locations. Exciting new projects are on the horizon and you can be a part of them!

Encourage your Friends to Join Today!

Yes! Count me in!

Name: _____
 Address: _____
 City: _____ State: _____ Zip: _____ Telephone: _____
 Chapter: _____ Email Address: _____
 Check here if you prefer to receive our newsletter via email.

Family Membership:

Annual \$25.00 Three Year \$70.00 Life \$350.00

Club Membership:

\$ _____ A club membership consists of a donation every year to support the Model A Ford Museum operations. We appreciate every gift, large or small.

I wish to make an additional optional tax deductible contribution of: \$ _____
 Please apply addition contribution to: Museum Displays Endowment Fund

Total Contribution Enclosed: \$ _____

Please print and mail this form to: MAFFI, PO Box 28, Peotone, IL 60468-0028



**Deadline for submissions for
the next
Distributor is
November 20, 2019**

**Submit all Articles and ads to
tissysmith1@gmail.com or
mail to
P.O. Box 10595
Santa Ana, CA 92711**

(Continued from Page 5) Registration forms are to be filled out and given/mailed to him and not to the show. He will present them as a group for registration at the special rate. Special thanks to John Clinard of Ford Motor Company for these special low entrance fees.

Frank also updated members as to the new rates for the Pancake Breakfast. He will be buying three new grills again this year. The new ones are more efficient than the two older ones used last year. That purchase will give us five good grills.

Elections - Joe Goff solicited names to fill the expiring terms of Dennis Kliesen, Technical and VP/Activities Steve Pavich. Joe encouraged members to put up their names for each office. He stressed that no one is a Lone Ranger in these jobs, you would have a lot of help from others. Members will be contacted personally this coming month as elections are held in November.

4th Thursday Breakfast Terry Collings has arranged breakfast for club members at Paul's Restaurant in Fountain Valley this month on the 24th. Be there at 8:30 A.M. Address: 16947 Bushard St.

Tonight's refreshments are from Jim and Diane Runyon, Mary and Don Dormeyer, and Carolyn and Don Ratzlaff. Carolyn needs volunteers to sign up for coming months meetings.

Hard Luck Trophy went to Dennis Kliesen this month.

The Membership Drawing was the big prize for the night. It was #42 for \$70 to Gerald and Diane Gaughen and they were there to receive the prize.

Meeting adjourned.

Norm Kredit, Secretary



Cabrillo Marine Aquarium



Did you miss this fun tour?



TOUR TO MOUNT BALDY Tuesday, November 19th

Don Ratzlaff will be heading another great tour to Mount Baldy. We will meet at the Panera Bread on Imperial in Brea at 8:30am, leaving at 9am. This will be all surface streets (probably the same route as last year). The plan is that we will arrive at the Baldy lodge around noon, have lunch and start down by 1:30pm. Should arrive at Panera Bread by 3:30pm. Sunset is expected to be around 5:30pm.

We won't be stopping at Art and Olive Moore's due to the shortened daylight hours.

ORANGE COUNTY
MODEL A FORD
CLUB

Post Office Box 10595
Santa Ana, CA 92711

E-mail: info@ocmafc.org

Next General Meeting

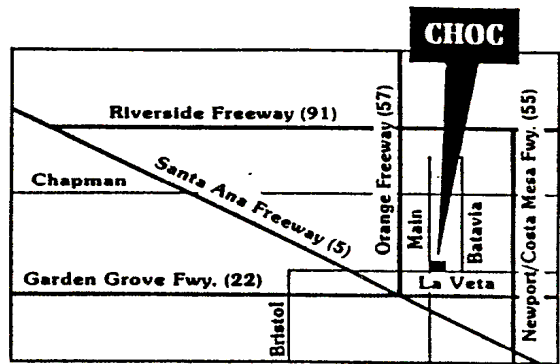
7:30 PM

[Second Thursday of every month]

Next Meeting November 14, 2019

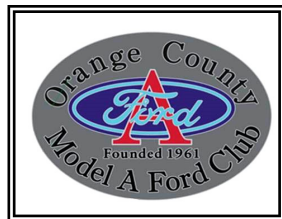
CHOC Hospital Complex

455 South Main Street, Orange, CA



From Main Street, turn east on to Providence Ave. and immediately on your right, enter the structure and park on the second level. Meetings are held in Building 2 in the Wade Education Center-2nd Floor. Access meeting room through the double door entry off the 2nd Floor parking structure

We are on the Web!
www.ocmafc.org



Return Address:
Post Office Box 10595
Santa Ana, CA 92711

To:

First Class Mail